

Elliot Norton Park



Community Meeting #2

July 10, 2013, 6:30 pm

Quincy Community Center

885 Washington Street

Site Design Options, Meeting 2 of 3

Elliot Norton Park Agenda

- **Sign-in** with email or contact information for project updates
- **Introductions**
- **Meeting overview**
- **Project funding and schedule**
- **Review of Site Analysis and Community Input**
- **Presentation of Site Design Options**
- **Community Input**
- **Closing Remarks**



Elliot Norton Park Design Steps

~~1. Design team to meet with the neighborhood to obtain community perspective on the park and to share our analysis of the park.~~

2. Design team to balance neighborhood comments and safety improvements in up to three alternatives to review and choose from.

Community will meet to review and comment on these alternatives.

3. Design team will combine the most community desired aspects of each alternative into one design.

Community will meet to confirm the final design in late summer.

•Project documents will be bid so that construction can begin in Spring 2014.



Elliot Norton Park Map



Elliot Norton Park

As-built plans, 1978



Elliot Norton Park Neighborhood Confluence



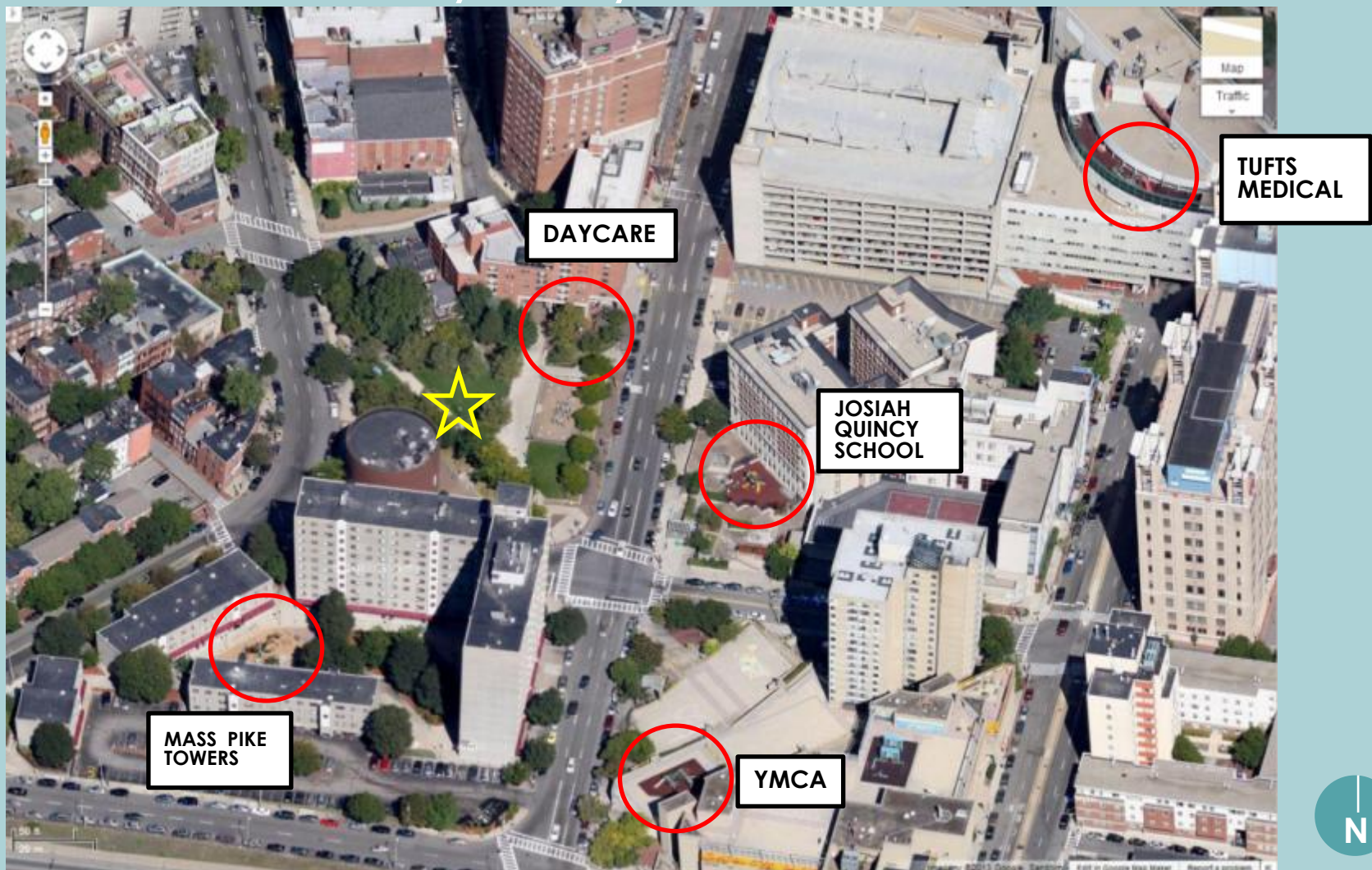
Elliot Norton Park

Nearby Public Parks



Elliot Norton Park

Other Nearby Play Areas



Elliot Norton Park

Existing Uses



Park Total – 1 Acre

Paving – 41%
17,850 sf

Lawn – 28%
12,055 sf

Planting Area - 22%
9,300 sf

Play area – 7%
3,000 sf

2 slides, sliding pole, tic tac toe, 5 platforms, monkey bars, overhead glider

Private play area – 2%
790 sf



Elliot Norton Park

Existing Uses



Elliot Norton Park

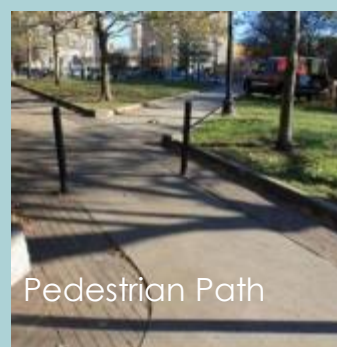
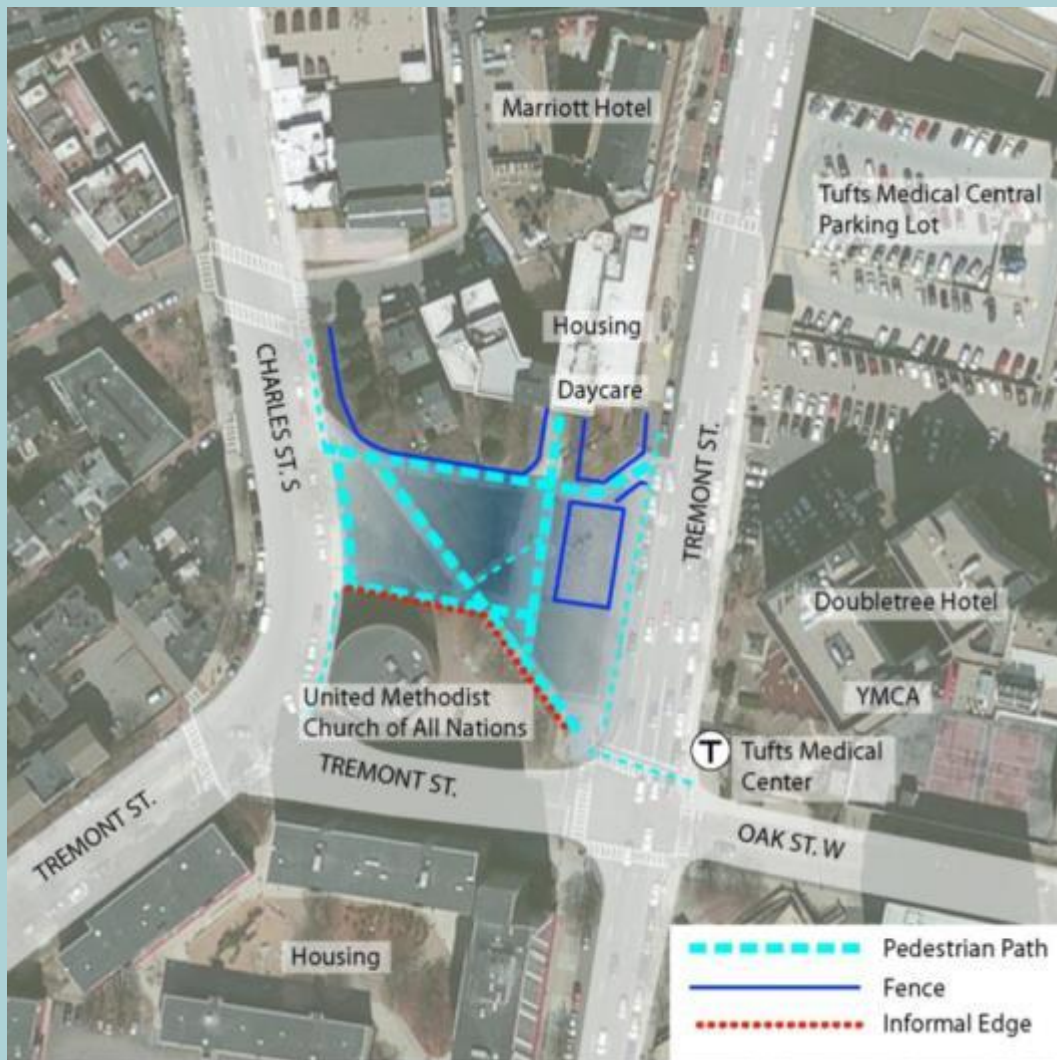
Circulation and Edges



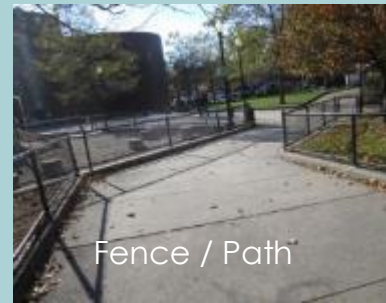
Informal Edge



Fence



Pedestrian Path



Fence / Path



Church of All Nations

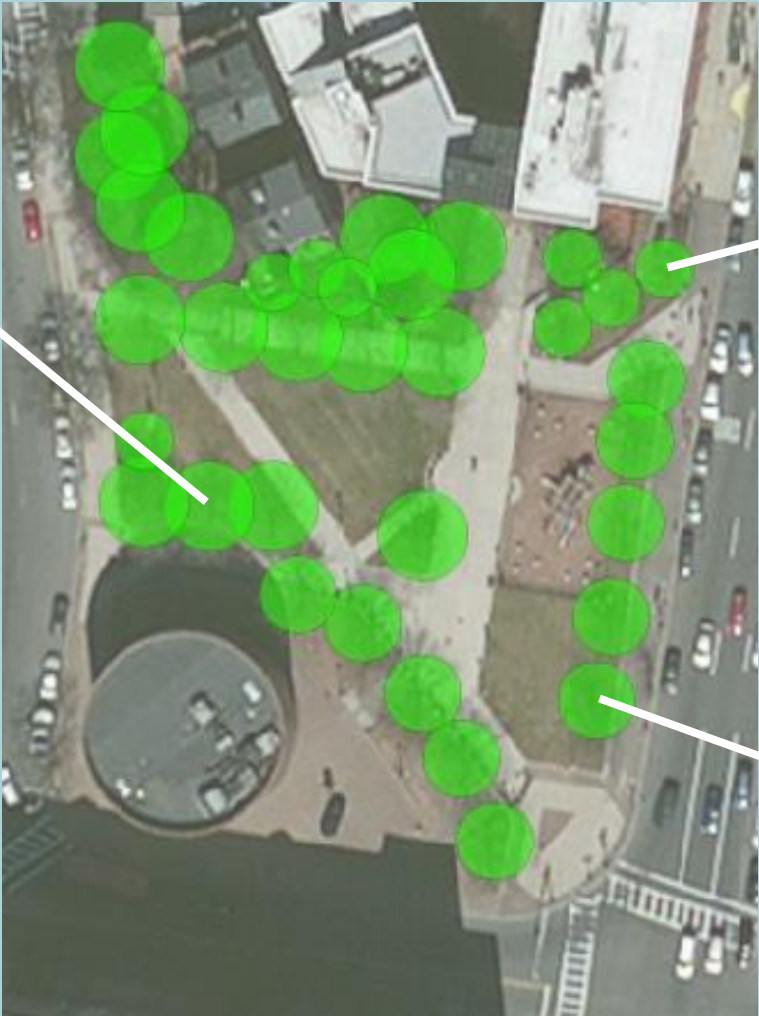


Elliot Norton Park

Tree Canopy



London Plane Tree



Cherry



Honey Locust

Elliot Norton Park

Hopes and Dreams

- Why do you visit the park?
- What are your best memories of the park? What works well?
- What do you feel doesn't work so well in the park?
- Do you feel safe in the park?
- If you could wave your magic wand, what would you like to see happen in the park?



Elliot Norton Park

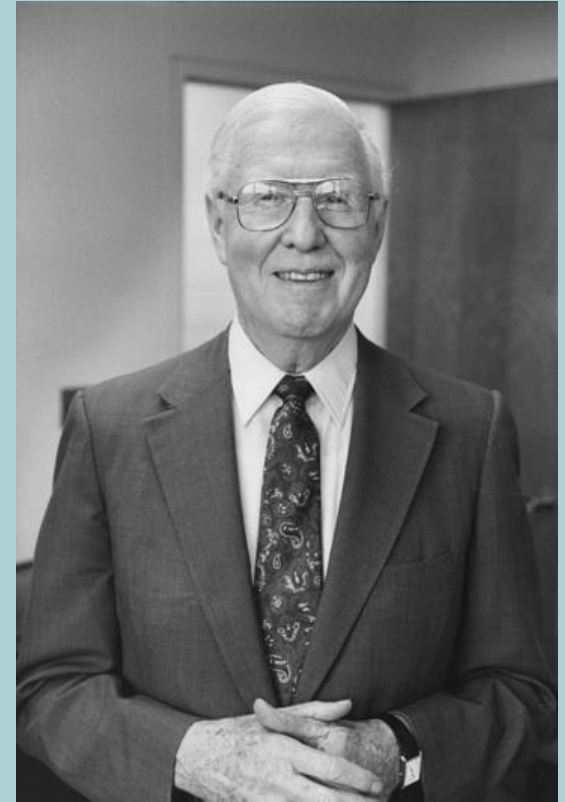
Meeting 1 – What we learned

- The park is well used and well cared for
- Site security is a major concern due to nighttime activity and undesirable use
- Possible fencing locations, type, and use were discussed
- More light is desired
- A playground that caters to more age groups is desired
- The community is open to new programming (i.e. family fitness equipment, café style seating, performances , art in the park)
- The circulation paths are overly generous
- The trees are an asset to the park
- The park should not be given over to one active sport
- Street crossings are a concern
- An iconic shade/stage/seating structure is desirable if affordable

Elliot Norton Park

3 Schemes

- 3 different schemes engaging the information we learned from the last meeting
- Each are a variation on the theme of the theatre, in honor of the park's namesake



Elliot Norton, renowned theater critic

Elliot Norton Park

Scheme #1 – Balcony View



Degas, The Green Dancer



Romeo and Juliet Balcony, Verona, IT



Justin Bieber, Paris, FR

Elliot Norton Park

Scheme #1 – Balcony View

Paving – 47%
Lawn – 17%
Planting Area – 27%
Tot Lot – 9%

TRELLIS / PERGOLA



NARROWER WALKWAYS

“STAGE” AND
SHADED SEATING
AREA

RESTORED LAWN
WITH IRRIGATION

SLIGHTLY SHIFTED
FENCE & NEW
BENCHES

SEATING MEZZANINE
W/ POSSIBLE CAFÉ
TABLES AND FOOD
TRUCKS

EXPANDED
TOT LOT

Elliot Norton Park

Scheme #1 – Balcony View



North
Boston



Cumberland Park, Nashville TN



Rose Kennedy Greenway, Boston, MA

Elliot Norton Park

Scheme #2 – Theatrical Promenade



Vue de Marly
1800 France



Central Park, NYC, NY



Montreal, QC

Elliot Norton Park

Scheme #2a – Theatrical Promenade

Paving – 43%
Lawn – 21%
Planting Area – 30%
Tot Lot – 6%

SPLASH AREA

PLAY
AREA

CURVED
PLANTER
WALLS

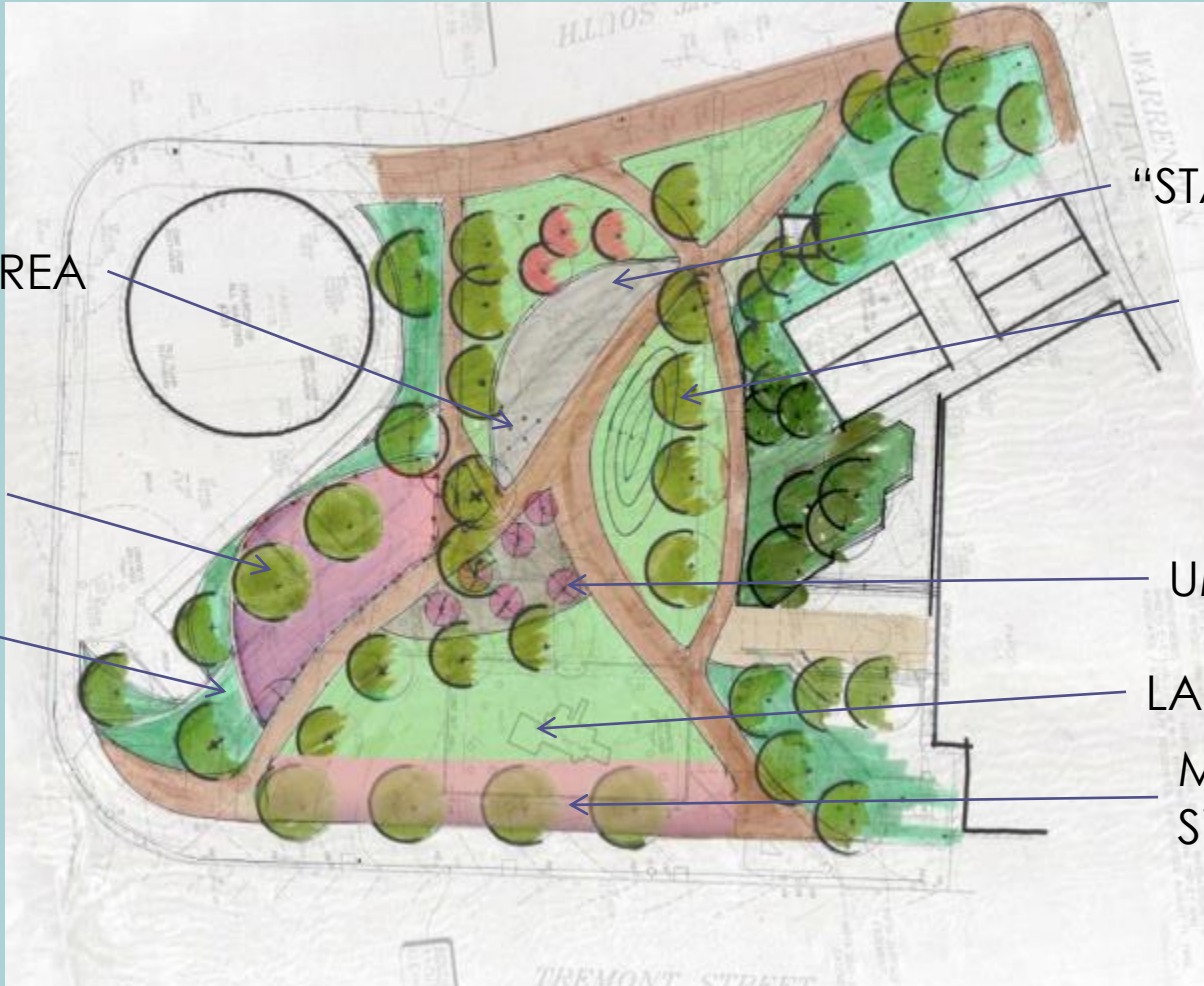
“STAGE”

LAWN
LAND
FORM

UMBRELLAS

LAWN

MUSICAL
SWING EDGE?



Elliot Norton Park

Scheme #2 – Theatrical Promenade



Cumberland Park, Nashville, TN



Musical Swings, Montreal, QC



Rose Kennedy Greenway, Boston, MA



Cumberland Park, Nashville, TN



Sugar Beach, Toronto, ON

Elliot Norton Park

Scheme #2b – Theatrical Promenade

Paving – 43%
Lawn – 21%
Planting Area – 28%
Tot Lot – 6%
Exercise area – 2%



Elliot Norton Park Scheme #3 – Staged Improv



Italian Festival, Washington, DC



Improv Asylum Group

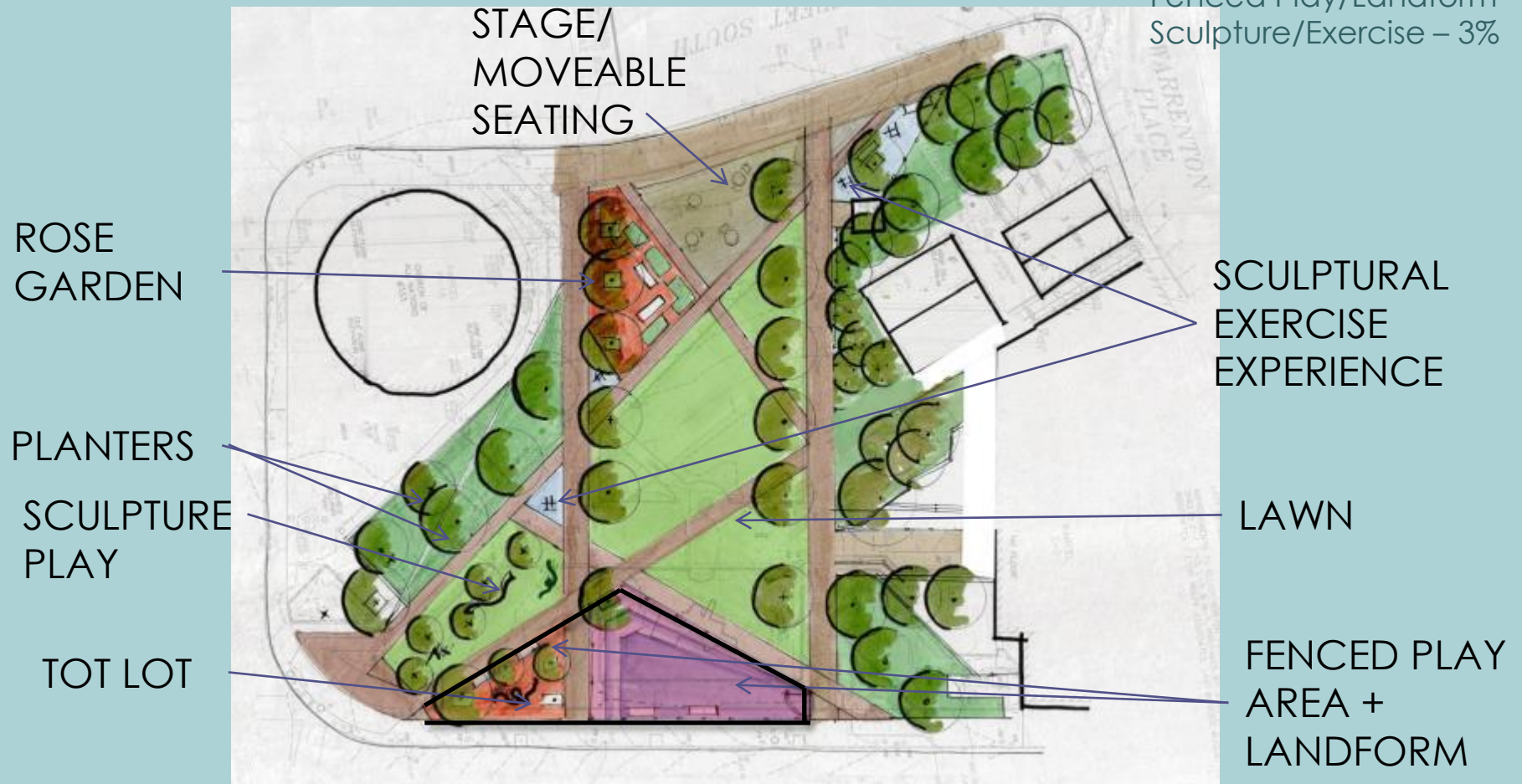


Impromptu Dance, Denver, CO

Elliot Norton Park

Scheme #3a – Staged Improv

Paving – 46%
Lawn – 22%
Planting Area 17%
Rose Garden – 4%
Tot Lot – 2%
Fenced Play/Landform – 6%
Sculpture/Exercise – 3%



Elliot Norton Park

Scheme #3 – Staged Improv



Scholar's Green,
Mississauga ON



Toronto, ON



Ujbuda City Centre,
Hungary



Innsbruck Olympic Village, Austria

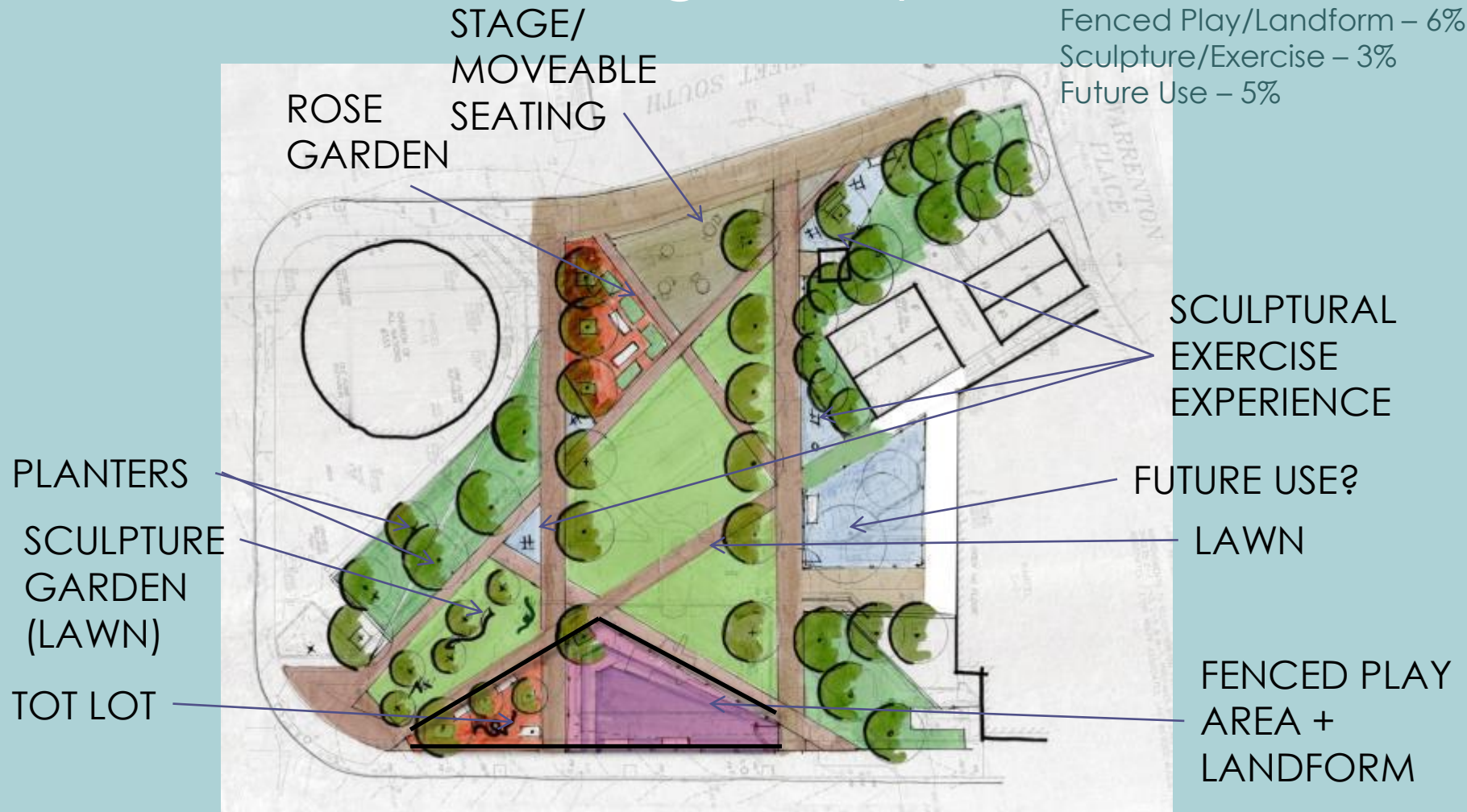


Plaza Euskadi, Bilbao, Spain

Elliot Norton Park

Scheme #3b – Staged Improv

Paving – 44%
Lawn – 22%
Planting Area 14%
Rose Garden – 4%
Tot Lot – 2%
Fenced Play/Landform – 6%
Sculpture/Exercise – 3%
Future Use – 5%



Elliot Norton Park

3 Schemes

Existing Conditions

Lawn – 27%
Planting Area – 23%
Paving – 40%

Play area – 7%
Private play area – 2%



Scheme 1

Balcony View

Paving – 47%
Lawn – 17%
Planting Area – 27%
Tot Lot – 9%

Scheme 2

Theatrical Promenade

Paving – 35%
Lawn – 26%
Planting Area – 33%
Tot Lot – 6%

Scheme 3

Staged Improv

Paving – 40%
Lawn – 22%
Planting Area 27%
Tot Lot – 2%
Fenced Play/Landform – 6%
Sculpture/Exercise – 3%

Elliot Norton Park

Thank you